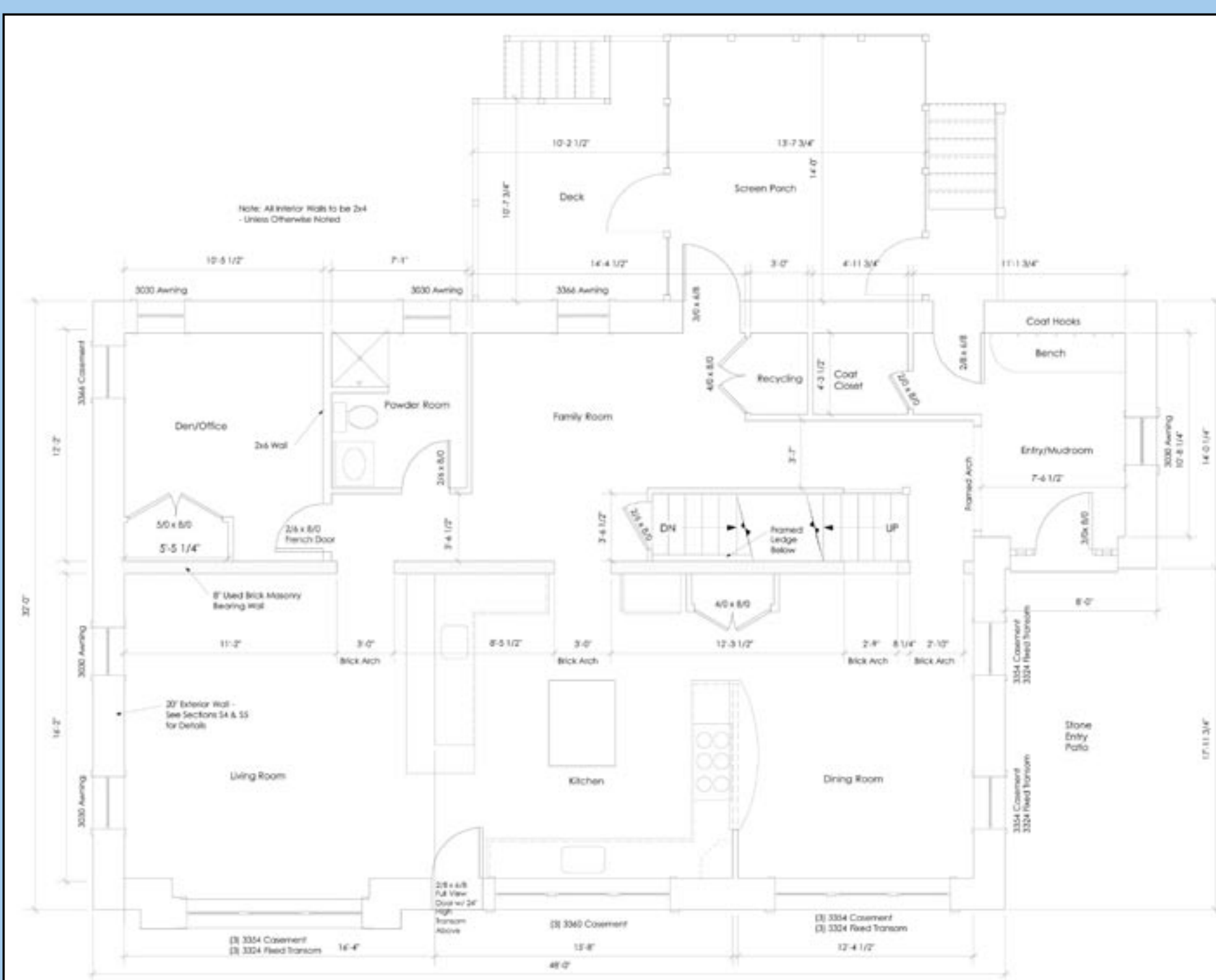
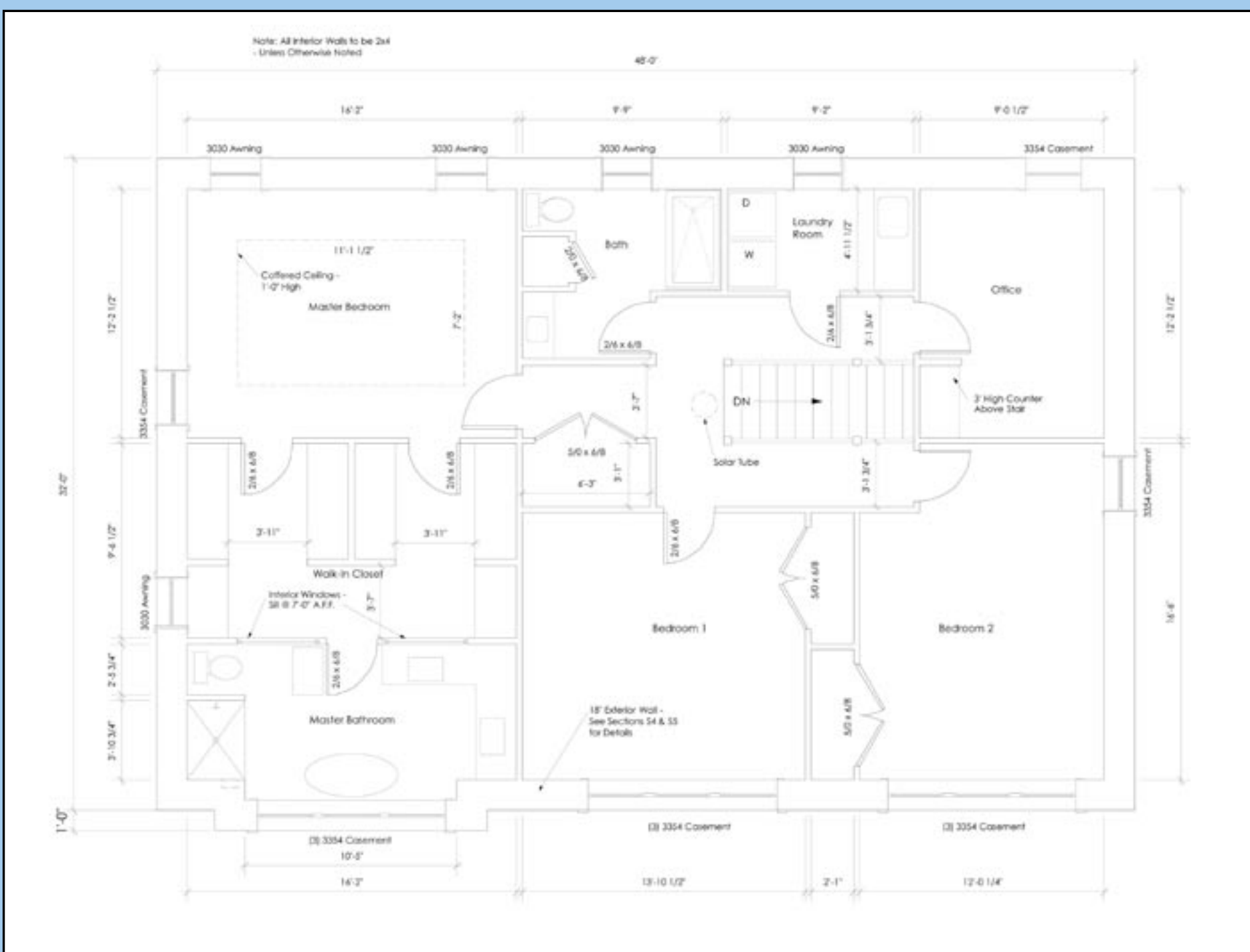
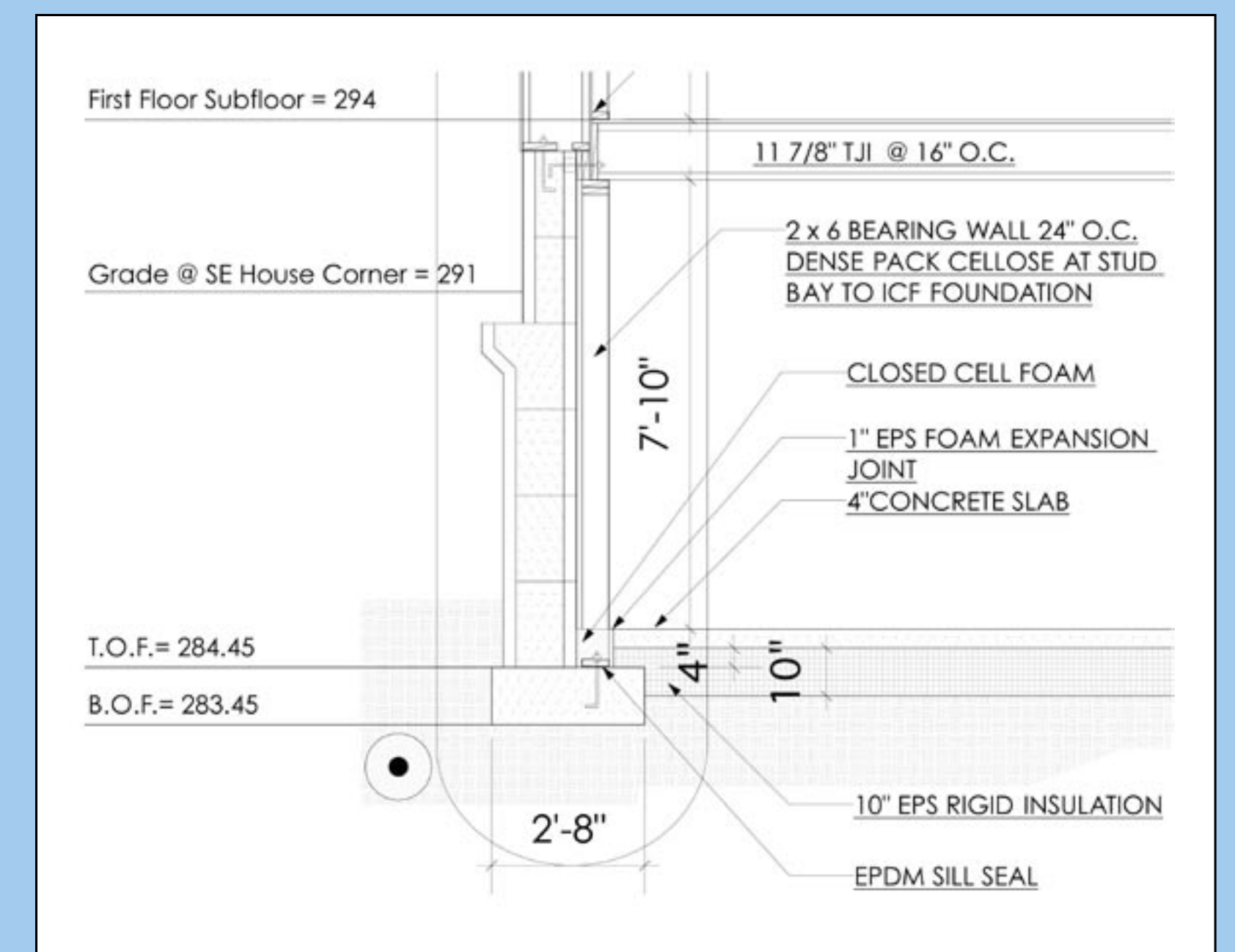
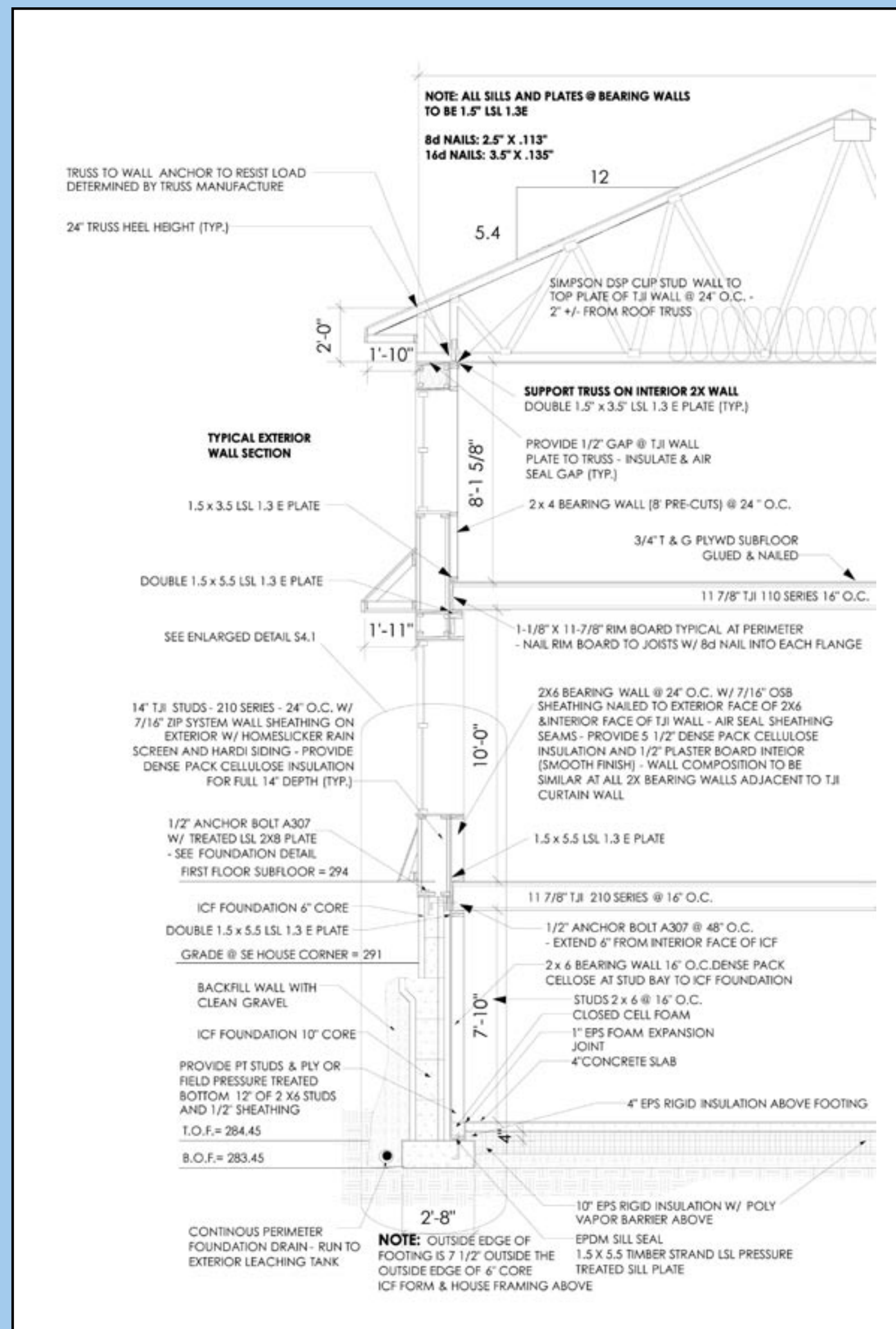


# Beaton Passive House

5th Annual North American Passive House Conference Poster Session  
 November 4, 2010 7:00 - 9:00 pm  
 Portland Hilton, Pavilion Room

Beaton Residence	
Shrewsbury, MA	
3399 sq. ft. (TFA)	
Project Team	
Certified PHC	Paul Panish
Architect	Mark Yanowitz Verdeco Designs
Builder	Matthew Beaton
Certifications	In Process
Heat Demand	3.10 kBTU/(ft <sup>2</sup> yr)
Air Tightness	0.44 ACH <sub>50</sub> (finished)
Primary Energy	27.9 kBTU/(ft <sup>2</sup> yr)
Cooling Demand	1.88 kBTU/(ft <sup>2</sup> yr)
Heating Load	3.38 BTU/(ft <sup>2</sup> hr)
Cooling Load	1.57 BTU/(ft <sup>2</sup> hr)



Envelope	IP (R-Value)	
Basement Foundation Walls	51.8	
Slab Floor	41.3	
First Floor Framed Walls	65.7	
Second Floor Framed Walls	58.2	
Ceiling (main)	126.2	
Glazing	IP (U)	SHGC
North AGC Comfort E2 Triple-2 Argon S.S.	0.13	0.55
East AGC Comfort E2 Triple-2 Argon S.S.	0.13	0.55
South AGC Comfort E2 Triple-2 Argon S.S.	0.16	0.64
West AGC Comfort E2 Triple-2 Argon S.S.	0.13	0.55
South Doors Thermotech 322 Grain	0.16	0.61
Ventilation	IP (CFM)	
RecoupAerator 200DX, 82.5% Effective	139	
Heating and Cooling System	Zone IV (V)	SEER
Mitsubishi MXZ-3A30NA, 2 Heads, Non-Ducted	10 (7.5)	16
DHW System		
Two 4'x8' Flat Plate Collectors		
80 gal Rheemglas Fury w/ electric backup		
Schuco SDC204 Controller, PS 1.3 Solar Station		